

Controlling and signalling modules USS

1M

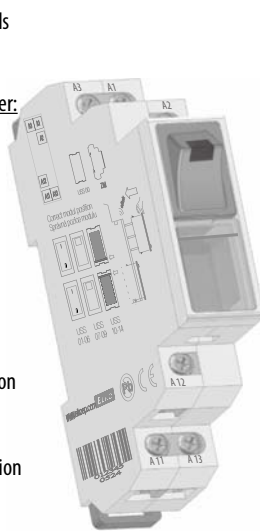


- designated for switching, controlling and signalling by auxiliary any power circuits
- new innovative solution of previous controlling and signalling modules OS
- USS – "Do It Yourself" = it is possible to "click into" different types of switches and signalling units into the basic module
- units are delivered individually, configurations are executed by user
- 15 types of units: switches, push buttons, illuminated switches, signal lights of different colours including flashing lights
- units are replaceable also for future (for example when an application is changed, extended, etc...)
- it is possible to place up to two units into one MODULE (for example 2x switch, 2x signalling lights or combinations) = when compared with competitors it is saving place in a switch board
- 1-MODULE, DIN rail mounting
- operating temperature -20.. +55 °C
- clamp terminals, screw M 3.5 combined head, screwdriver pozidrive No.1

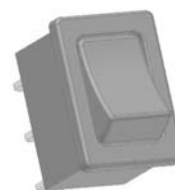
Units

CONNECTION INDICATION	RATED CURRENT/VOLTAGE (FOR SWITCHES) SUPPLY VOLTAGE (FOR SIGNALLING LIGHTS)	DESCRIPTION
USS-ZM		Basic MODULE (housing with terminals and contacts)
USS-00		Blind flange
USS-01		Switch
USS-02		Alternation switch
USS-03		Switch with central position
USS-04		Switch + button with central position
USS-05		Switching button with central position
USS-06		Push button
USS-07		Switch with glow lamp (red)
USS-08		Switch with glow lamp (green)
USS-09		Switch with glow lamp (yellow)
USS-10		Signalling LED (red)
USS-11		Signalling LED (green)
USS-12		Signalling LED (yellow)
USS-13		Signalling LED (white)
USS-14		Signalling LED flashing (red)
USS-15		Signalling LED (blue)

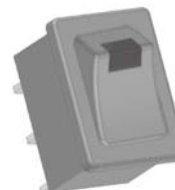
Make your own device USS - easy and intelligent solution!



Example of an order:
+ USS - ZM
+ USS - 07
+ USS - 11



SWITCHES, PUSH BUTTONS
They have a low uplift and a large finger-board. Thanks to this design and switching mechanism they fulfil high expectations for number of switching and contact quality.
Unit: 01-06



SWITCHES WITH GLOW LAMP
Switch and signalization in one unit. Signalization is carried out by a glow lamp in dolly including series resistance. It is possible to instal it for permanent indication or for an intermitted by contact of the switch.
Colours: red, green, yellow Supply voltage of the signalling light: AC250 V.
Unit: 07-09



SIGNALLING LIGHT
High luminance is ensured by SMD LED diode, which equally illuminates by its colour all surface of the transparent signalling light. It is possible to supply the signalling light by AC 230 V, and also by AC/DC 24 V with minimal input. Red sig. light is delivered also in a flashing version. Unit: 14.
Colours: red, green, yellow, white, blue
Unit: 10-15



BLINDFLANSCH
determined to fill in an empty position of a unit in a front panel of MODULE USS.
Colour: grey, RAL7035 (the same as the housing).
Unit: 00



Switching units (01-09) come from a well-known French company APEM. Quality of switches is guaranteed by many years of experience in this field (since 1952) and by world-approved certificates VDE a UL. A unique switching mechanism ensures long-term life of switching with continual parameters.

Terminal connection



Laser marking

Switches and buttons are marked by laser according to your request in case you order 50 pcs and more.

Max. number of symbols:



Dimensions

See page 90-92