

Power relays modular type VS

1M



- to strengthen of current device or multiply contacts
- output contact: VS116K, VS116U: 1x changeover 16 A
VS308K, VS308U: 3x changeover 8 A
VS316/24, VS316/230: 3x changeover 16 A – possibility of connection into 3-phase circuit
- output status is indicated by highly luminous LED
- choice of LED color for output status indication: red, green, yellow, blue or white LED*
- inbuilt diode for suppressing unwanted peaks while relay opening and RC element against disturbances
- 1- MODULE, DIN rail mounting

Technical parameters	VS116K	VS116U	VS308K	VS308U	VS316/24	VS316/230
Supply terminals:	A1 - A2	A1 - A2	A1 - A2	A1 - A2	A1 - A2	A1 - A2
Supply voltage:	AC 230 V/50-60 Hz	AC/DC 12-240 V/ 50 - 60 Hz	AC 230 V/ 50-60 Hz	AC/DC 12-240 V/ 50 - 60 Hz	AC/DC 24 V/ 50 - 60 Hz	AC 230 V/ 50-60 Hz
Consumption:	AC max. 7.5 VA/ 1W	AC 0.7 - 3 VA/ DC 0.5 - 1.7 W	AC max. 10.3 VA/ 1.1 W	AC 0.7 - 3 VA/ DC 0.5 - 1.7 W	1.6 VA/ 1.2 W	2.5 VA
Supply terminals:	A1-A3	x	A1-A3	x	x	x
Supply voltage:	AC/DC 24 V (50-60 Hz)	x	AC/DC 24 V (50-60 Hz)	x	x	x
Consumption:	AC 1 VA/ DC 1W	x	AC 1 VA/ DC 1W	x	x	x
Supply voltage tolerance:	-15%; +10%	-15%; +10%	-15%; +10%	-15%; +10%	-15%; +10%	-15%; +10%
Output						
Number of contacts:	1 x changeover (AgSnO ₂)	1 x changeover (AgSnO ₂)	3 x changeover (AgNi)	3 x changeover (AgNi)	3 x changeover (AgSnO ₂)	3 x changeover (AgSnO ₂)
Rated current:	16 A/ AC1	16 A/ AC1	8 A/ AC1	8 A/ AC1	16A/ AC1	16 A/ AC1
Breaking capacity:	4000VA/ AC1, 384W/ DC	4000VA/ AC1, 384W/ DC	2000VA/ AC1, 192W/ DC	2000VA/ AC1, 192W/ DC	4000VA/ AC1, 384W/ DC	4000VA/ AC1, 384W/ DC
Inrush current:	30 A/ <3s	30 A/ <3s	10 A/ <3s	10 A/ <3s	30 A/ <3s	30 A/ <3s
Switching voltage:	250 V AC1/ 24 V DC	250 V AC1/ 24 V DC	250 V AC1/ 24 V DC	250 V AC1/ 24 V DC	250 V AC1/ 24 V DC	250 V AC1/ 24 V DC
Min. breaking capacity DC:	500 mW	500 mW	500 mW	500 mW	500 mW	500 mW
Output indication:	high intensity of LED	high intensity of LED	high intensity of LED	high intensity of LED	high intensity of LED	high intensity of LED
Mechanical life:	3x10 ⁷	3x10 ⁷	3x10 ⁷	3x10 ⁷	3x10 ⁷	1x10 ⁷
Electrical life (AC1):	0.7x10 ⁵	0.7x10 ⁵	0.7x10 ⁵	0.7x10 ⁵	0.7x10 ⁵	1x10 ⁵
Time between switching:	min. 2s	min. 2s	min. 2s	min. 2s	20 ms	50 ms
Other information						
Operating temperature:	-20.. +55 °C	-20.. +55 °C	-20.. +55 °C	-20.. +55 °C	-20.. +55 °C	-20.. +55 °C
Storage temperature:	-30.. +70 °C	-30.. +70 °C	-30.. +70 °C	-30.. +70 °C	-30.. +70 °C	-30.. +70 °C
Electrical strength:	4 kV (supply-output)	4 kV (supply-output)	4 kV (supply-output)	4 kV (supply-output)	4 kV (supply-output)	4 kV (supply-output)
Operating position:	any	any	any	any	any	any
Mounting/DIN rail:	DIN rail EN 60715	DIN rail EN 60715	DIN rail EN 60715	DIN rail EN 60715	DIN rail EN 60715	DIN rail EN 60715
Protection degree:	IP 40 from front panel	IP 40 from front panel	IP 40 from front panel	IP 40 from front panel	IP 40 from front panel	IP 40 from front panel
Overvoltage category:	III.	III.	III.	III.	III.	III.
Pollution degree:	2	2	2	2	2	2
Max. cable size (mm ²):	Solid: max.1x 2.5 or 2x1.5 Sleeve: max. 1x2.5	max.1x 2.5 or 2x1.5 max. 1x2.5	max.1x 2.5 or 2x1.5 max. 1x2.5	max.1x 2.5 or 2x1.5 max. 1x2.5	max.1x 2.5 or 2x1.5 max. 1x2.5	max.1x 2.5 or 2x1.5 max. 1x2.5
Dimensions:	90 x 17.6 x 64 mm	90 x 17.6 x 64 mm	90 x 17.6 x 64 mm	90 x 17.6 x 64 mm	90 x 17.6 x 64 mm	90 x 17.6 x 64 mm
Weight:	54 g	58 g	52 g	83g	90 g	92 g
Standards:	EN 61810-1, EN 61010-1	EN 61810-1, EN 61010-1	EN 61810-1, EN 61010-1	EN 61810-1, EN 61010-1	EN 61810-1, EN 61010-1	EN 61810-1, EN 61010-1

Notes:

Max. time of changeover of contact is 10ms.

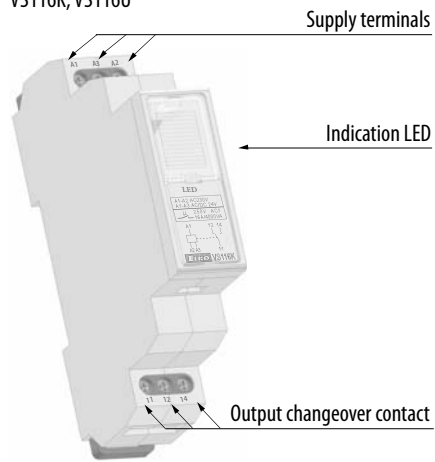
VS316/24 or VS316/230 enables switching of different phases or 3 phase voltge.

* - blue and yellow - possibility to choose blue and yellow color of LED for power relays line VS in case of minimal order quantity 100 pcs.

Power relays modular type VS

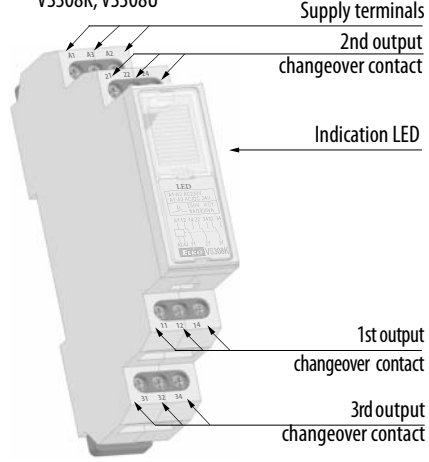
Description

VS116K, VS116U



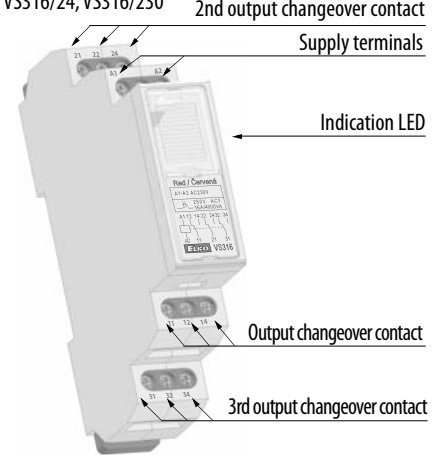
terminal A3 only for VS116K

VS308K, VS308U



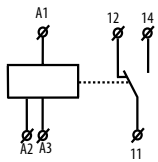
terminal A3 only for VS308K

VS316/24, VS316/230

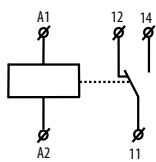


Symbol

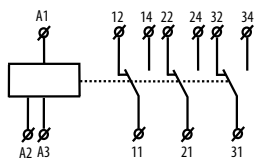
VS116K



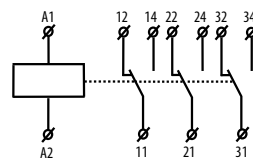
VS116U



VS308K



VS308U



VS316/24, VS316/230

