

XWEB FUNCTIONS

An overview of some most important XWEB family functions.

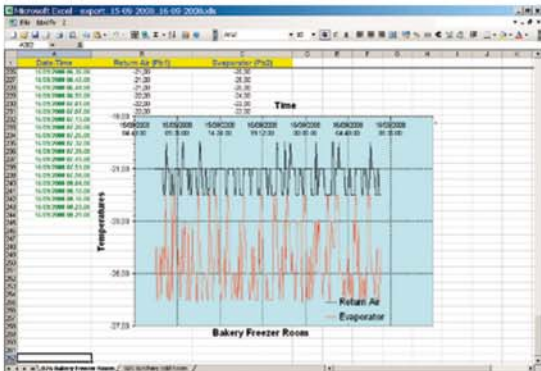
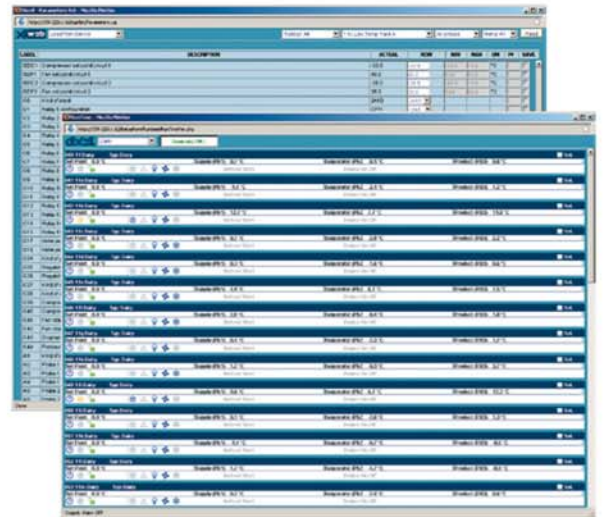
| Address | Model | Name | FK | PK | % CR | % Lev | TimeOut | N | Test |
|---------|--------|----------------------------|-------|-------|------|-------|---------|---|------|
| 73 | DM483K | 13 HLL | 1995 | 0 | | 83.33 | 0:00 | 0 | Test |
| 109 | DM483K | Liquor Store CAR L&E1 | 1995 | 0 | | 83.33 | 0:00 | 0 | Test |
| 110 | DM483K | Liquor Store CAR L&E2 | 1977 | 0 | | 83.33 | 0:00 | 0 | Test |
| 76 | DM483K | 13 HLL | 23816 | 19800 | | 83.33 | 0:00 | 0 | Test |
| 77 | DM483K | 13 HLL | 23768 | 19800 | | 83.34 | 0:00 | 0 | Test |
| 78 | DM483K | 13 HLL | 23731 | 19777 | | 83.34 | 0:00 | 0 | Test |
| 79 | DM483K | 13 HLL | 23729 | 19775 | | 83.34 | 0:00 | 0 | Test |
| 80 | DM483K | 13oz Chex | 22742 | 19784 | | 83.33 | 0:00 | 0 | Test |
| 95 | DM483K | 14oz Bakery | 22705 | 19800 | | 83.33 | 0:00 | 0 | Test |
| 96 | DM483K | 21oz Fruit & Veg | 23720 | 19767 | | 83.33 | 0:00 | 0 | Test |
| 98 | DM483K | Roll in a Roll Fruit & Veg | 23722 | 19766 | | 83.34 | 0:00 | 0 | Test |
| 118 | DM483K | 05c High Meat | 23724 | 19770 | | 83.34 | 0:00 | 0 | Test |
| 119 | DM483K | 05c High Meat | 23740 | 19792 | | 83.33 | 0:00 | 0 | Test |
| 121 | DM483K | 06g Omelette | 23718 | 19765 | | 83.33 | 0:00 | 0 | Test |
| 80 | DM483K | 11oz Dairy | 23713 | 19759 | | 83.33 | 0:00 | 0 | Test |
| 150 | DM483K | Energy Analyzer | 18480 | 18410 | | 83.62 | 0:30 | 0 | Test |
| 17 | DM483K | 1516a Icecream | 23719 | 23703 | | 99.99 | 0:01 | 0 | Test |
| 105 | DM483K | 11oz Dairy | 23878 | 23874 | | 99.99 | 0:02 | 0 | Test |
| 98 | DM483K | 11oz Dairy | 23745 | 23707 | | 99.84 | 0:18 | 0 | Test |
| 98 | DM483K | Oven CAR OC1 | 19792 | 19793 | | 99.99 | 0:01 | 0 | Test |
| 99 | DM483K | Oven CAR OC2 | 19800 | 19764 | | 99.83 | 0:17 | 0 | Test |
| 100 | DM483K | Bakery CAR H | 19802 | 19801 | | 99.99 | 0:01 | 0 | Test |
| 106 | DM483K | Dairy CAR E1 | 19789 | 19789 | | 99.99 | 0:01 | 0 | Test |

RS485 LINE-CHECK

A powerful new tool is able to check performance and statistic data for each controller by carrying out a functional test for every device connected to the RS485 network. You can then have information regarding the quality of the connection. The tool is very useful especially when there is the necessity analyse a network problem; with a statistics that allows you to easily identify which instrument has a connection problem.

PARAMETER PROGRAMMING AND RUN TIME

Thanks to the XWEB the user has an intuitive, powerful and at the same time, very versatile device, that allows him/her to modify the various functioning parameters of the instruments. It will no longer be necessary to make manual adjustments on the controller, because by using the different windows available, and with a few simple operations, it's possible to obtain the required updating. The Run Time function displays many devices together in a unique window. This is dynamic page and the data showed is updated in real time. The status of the devices connected (also from different manufacturers) is displayed simply and clearly and it's possible to modify the various functioning parameters of the instruments.

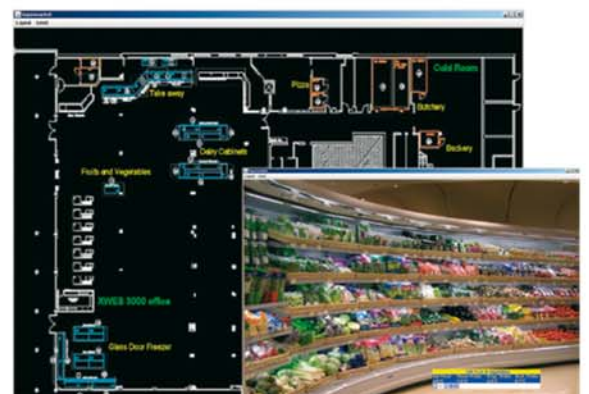


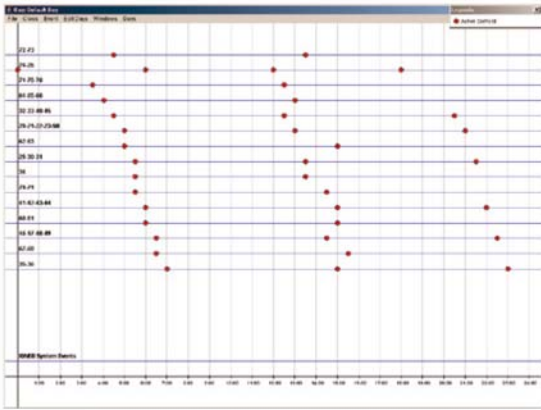
DATA EXPORT

It is possible to export all data information in a Microsoft Excel® file. The user can later use this information to build graphs or to collect data. It is possible to select a data interval and filter between different controllers.

LAYOUT AND GLOBAL COMMANDS (FOR XWEB500D, XWEB500, XWEB3000, XWEB5000)

A powerful graphic editor that doesn't require the installation in your PC of any additional software, is what makes XWEB layout the ideal solution. Using this function the user can access all the recorded data of the controllers and even send a command to a controller. Global Commands option let you send multiple commands to one or more controllers at the same time. In addition, using the digital input it is possible to automatically start the sending of commands.



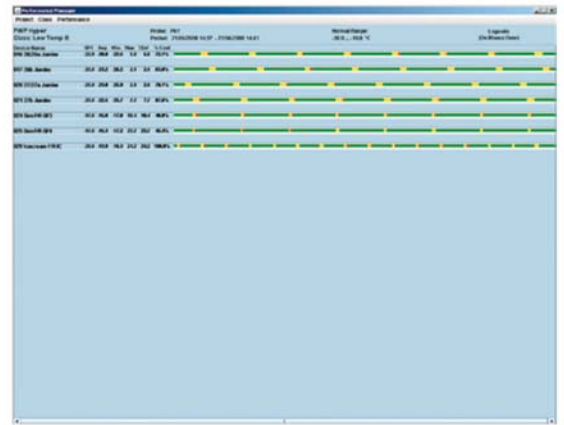


SCHEDULER (FOR XWEB500D, XWEB500, XWEB3000, XWEB5000)

The scheduler is a powerful graphic tool to manage commands sent to the controllers. You can quickly see an overview of all daily activity. This means that energy saving routines and defrosts can be easily scheduled.

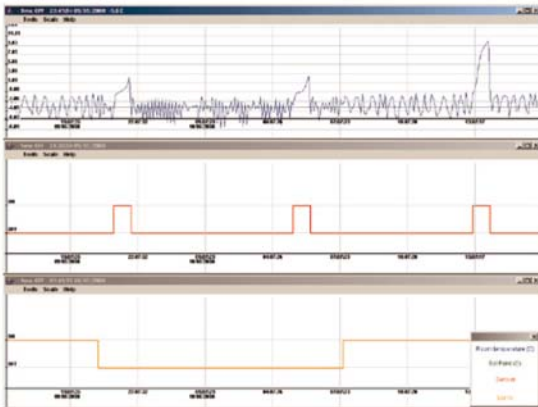
PERFORMANCE METER (FOR XWEB500D, XWEB500, XWEB3000, XWEB5000)

This highly appreciated function allows one to verify the right temperature for single devices (wall cabinets, benches, rooms, etc.). The graphic layout offers a complete vision about the plant operating mode.



GRAPHICS (FOR XWEB300D, XWEB500D, XWEB500, XWEB3000, XWEB5000)

The XWEB can supply powerful graphs, able to represent multiple analogue variables on the same pictorial system and the course of the status of the outputs and alarms. This allows the user to have a precise snapshot view of important variables, for easy diagnosis of faults.



XWEB CONNECTIONS

Among many important XWEB system features, a remarkable one is the possibility of linked servers using several methods: by PDA, by local PC or remote PC.

CONNECTION VIA PALMTOP COMPUTER (PDA)

When the connection is made by means of a Palmtop computer (PDA), the XWEB automatically recognises it and makes several dedicated pages available. On them is possible to display all the values of a device and send it commands.



LOCAL CONNECTIONS

XWEB server and associated systems can be locally linked connecting the system to a PC.



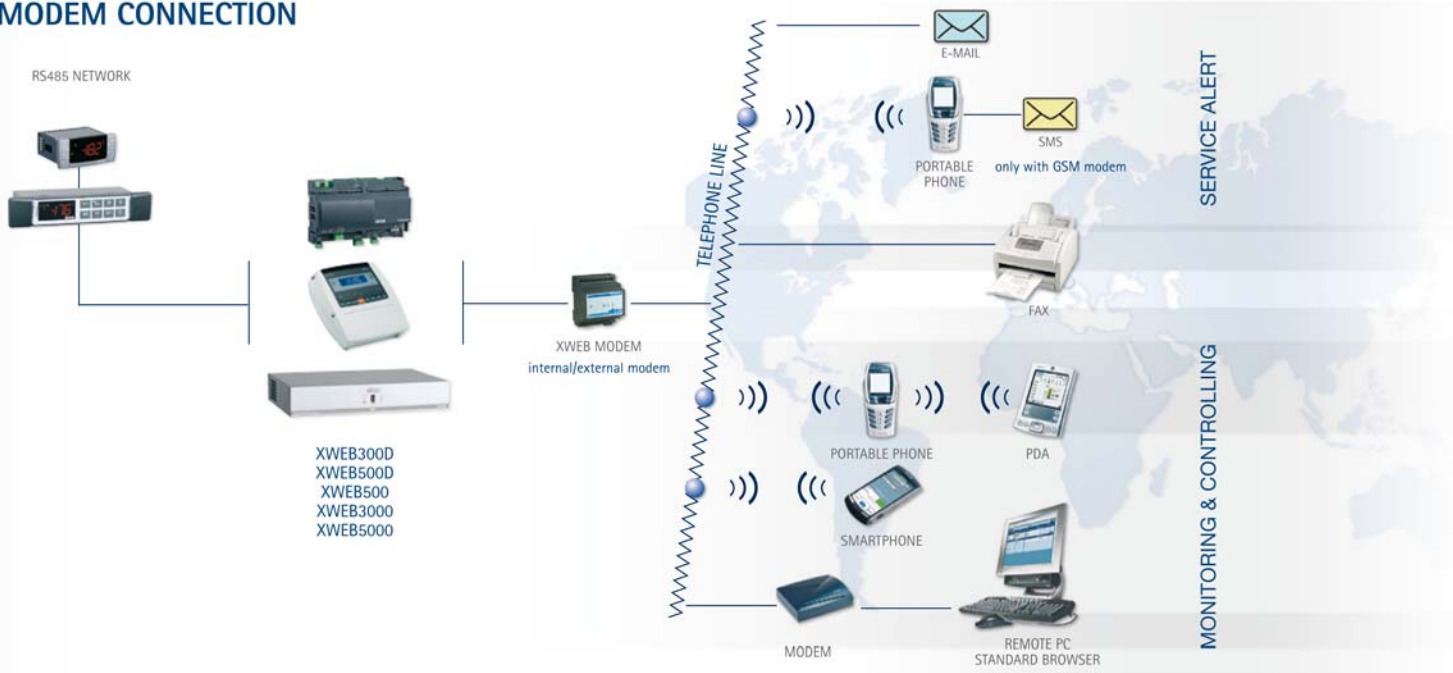
XWEB300D – XWEB500D – XWEB500 – XWEB3000 – XWEB5000

REMOTE CONNECTIONS

XWEB Server can be remotely accessed using several methods:

- by modem with point to point connection, also with GSM modem (only for devices that support it);
- by link in local Ethernet network, by means of standard net connector RJ45;
- by direct Internet connection, if provided with a static IP address.

MODEM CONNECTION



INTERNET/INTRANET CONNECTION

